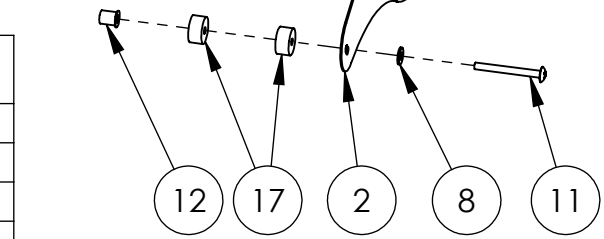


No. ARTICLE	NUMERO DE PIECE	DESCRIPTION	QTE
1	M7631002CG	SUN VISOR PANEL	1
2	M7631002CD	SUN VISOR PANEL	1
3	K7631002BH	HARDWARE KIT INCLUDES:	-
4	-	PR9631002-D01	1
5	-	PR9631002-G01	1
6	-	PR9631002-D02	1
7	-	PR9631002-G02	1
8	-	FLAT WASHER 1/4" SS	30
9	-	TRUSS PHILIPS 1/4"-20NCX3/4"SS	10
10	-	HEX. BOLT 1/4NC X 1	8
11	-	TRUSS HEAD SCREW 1/4NC X 2-1/2" Lg	2
12	-	LF,INSERT STL 1/4"-20NC X.160	10
13	-	NYLON LOCK NUT, 1/4-20 UNC	10
14	-	FLAT WASHER ID#10 X OD 1/2" SS	6
15	-	TRUSS PHILLIPS #10-32NF X 1/2"SS	3
16	-	NYLON LOCK NUT #10-32NF SS	3
17	-	ESPACEUR CAOUTCHOUC ID.25"XOD1"X1/2"LG	4



TRUX ACCESSORIES

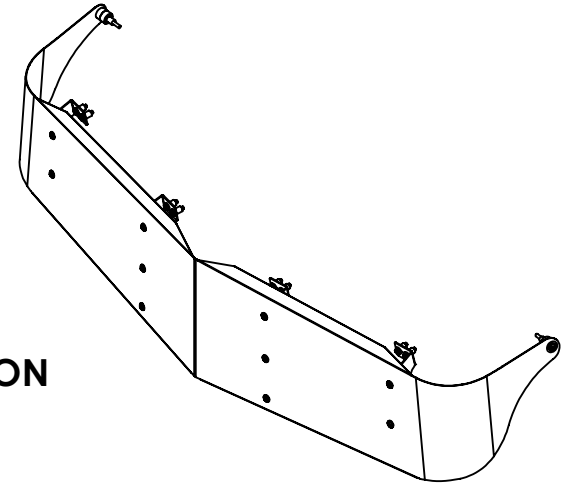
TITLE:
SUN VISOR
MACK "R"

SIZE DWG. NO.
A TSUN-M3

NAME	DATE	REV	DATE
DRAWN BY	-	PH1	-
SCALE: 1:7	WEIGHT: LBS		SHEET: 1 OF 1

**DO NOT REMOVE THE SPV PROTECTION
UNTILL THE INSTALLATION IS FINISHED**

READ ALL INSTRUCTIONS BEFORE BEGINNING INSTALLATION



INSTALLATION INSTRUCTIONS

- 1- ON A TABLE PREASSEMBLE THE SUN VISOR PANEL & THE BRACKETS
- 2- TEMPORARILY INSTALL THE SUN VISOR AT THE PROPER POSITION.
- 3- USING THE SUN VISOR, MARK BRACKETS HOLES.

ATTENTION

REMOVE SUN VISOR BEFORE DRILLING TO PREVENT DAMAGE

- 4- DRILL MARKED HOLES AT 25/64" (.390625") DIA.
- 5- INSTALL THE THREADED INSERT NUT.
- 6- REINSTALL THE SUN VISOR ON THE CAB.
- 7- MARK BOTH ENDS HOLES OF SUN VISOR ON CAB.

ATTENTION

REMOVE SUN VISOR BEFORE DRILLING TO PREVENT DAMAGE

- 8- DRILL MARKED HOLES AT 25/64" (.390625") DIA.
- 9- INSTALL THE THREADED INSERT NUT.
- 10- REINSTALL THE SUN VISOR ON THE CAB.
- 11- TIGHTEN ALL BOLTS AND SCREWS FIRMLY.

TRUX ACCESSORIES

TITLE:

SUN VISOR
MACK "R"

SIZE

DWG. NO.

A TSUN-M3

NAME	DATE	REV	DATE
DRAWN BY -	-	PH1	-
SCALE: 1:16	WEIGHT: LBS	SHEET: 1 OF 1	